

ACT Preview

ACT / June 2008

T.V. Talk...

We Need Your Help!

Archbold Community Theatre has been in operation for 30 years. For the first 21 years we were a traveling troop that performed at venues such as Elmira School, Fayette Opera House, Archbold Schools, and Ruihley Park. We were given various places to store our costumes, props, and building supplies during that time. In the mid 1990s ACT decided that it was time to find a permanent home. Many buildings were explored and the one that would meet our needs just couldn't be found. When hopes were diminishing a call was received about a building in Ridgeville Corners. After a good look at the building it was a unanimous decision that Giffey Hall would be a great building for ACT. With dinner theaters downstairs and performances upstairs it is perfect. ACT's building materials and furniture fit perfectly and fortunately an area business still gives us space to store costumes and props. The first performance was December 1999. A few years later, a building across the street from Giffey Hall was donated and that is where we keep our styrofoam products. ACT is very happy in Giffey Hall, Ridgeville Corners.

Owning your own building is expensive and there are additional expenses that never had to be paid previously; along with the many expenses involved with theater productions. Last year we paid: \$3,007.97 for gas; \$579.42 for waste removal; \$271.85 water and sewage; \$635.05 for telephone; 2,591.07 electricity; and \$7,757.40 for the mortgage. We normally present four shows a season and a couple of the expenses associated with doing a four show season are \$4,838.50 for advertising, ie: audition ads and announcing tickets on sale and approximately \$6,058 for royalties, scripts and music rental. On top of that we have the miscellaneous expenses of building materials, paint, props or costumes needed for the shows. During the last couple of years we have not generated enough from ticket sales to make even a small profit. All the expenses go up each year making it harder and harder to make ends meet.

Over the last few years, we have managed to scrape by with the support of members and advertisers. This year we were not able to do that. The fees associated with putting on the Wizard of Oz are huge. Fortunately, a couple of members have generously given us a loan to cover our mounting expenses until revenue from ticket sales comes in. There was also a member (wanting to remain anonymous) that made a mortgage payment for us. Thank you very much whoever you are!! To maintain a high quality production we need your help. Please consider becoming a member or advertiser this year. If you don't want to make that kind of a commitment, how about making a one time donation? No gift is too small. ACT is a non-profit organization and your gifts are tax deductible. We also appreciate in kind donations. Fund-raisers are taking place this year to help defray costs. A fund-raising night at Mancino's was in early June. We'll be selling Krispy Kreme doughnuts in July during the Carp Festival, and 50/50 raffle tickets will be sold at performances of the *Wizard of Oz*.

ACT loves providing live entertainment for the area and hopes to continue for many years to come. Please Help!

Thanks For The Donations

Archbold Community Theatre accepts donations of clothing, furniture, and general household items that are used for costumes and sets. If you have items that to donate, please contact any Board member.

A big THANKS to:

Mike and Sandy Short	Set Decorations
Ruth Nyce	Costumes
St Martin's Lutheran Church	Misc Equipment
Central Mennonite Church	Misc Equipment
Laubers Clothing / Tim Smith	Costumes
Brent & Elaine Winzeler	Costumes
Bettie Perry	Costumes / Props
Cameron Florist	Set Decorations
Melanie Nagel	Costumes/Props/Theater Books
Joe & Karen Crossgrove	Costumes

Inside this issue:

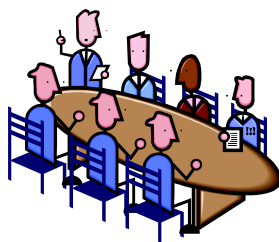
T.V. Talk - We Need Your Help! Thanks for the Donations	1
Committee Reports and 2008/2009 Season	2
We're Off To See The Wizard/ OCTA News	3
Director's Letter of Interest Deadline Dates	4

Committee Reports

Reading Committee: The Reading Committee is reading scripts for the 2009/2010 season. If you have a play or musical for them to read, contact Brenda Canada.

Production Committee: The Production Committee is working on the many duties required for the *Wizard of Oz*. If you are interested in helping behind the scenes for any show, contact Ed Mooney.

We always need volunteers!



Facilities Committee: The ACT Board approved the Facilities Committee recommendation for rate adjustments on the Giffey Hall basement rental. New rates are: \$100 for six hour rental; \$200 for twelve hour rental; and \$250 for twenty-four hour rental. ACT members and non-profit organizations are eligible for a 25% discount. So if you're looking for a place to hold a large meeting, celebrate a birthday, anniversary, or graduation, think of ACT.

For more details, contact Randy Rohrs.

Announcing ACT's 2008/2009 Season

Nuncrackers: The *Nunsense Christmas Musical* is first in our 2008-2009 season line-up. This "TV Special" taped by the sisters in their convent basement studio for Cable Access, stars the nuns you love plus Father Virgil and some of Mt. Saint Helen's most talented students. It features all new songs including: *Twelve Days Prior to Christmas*, *Santa Ain't Comin' To Our House*, *We Three Kings of Orient Are Us*, and *It's Better to Give Than To Receive*. This show is filled with typical *Nunsense* humor, some of your favorite carols, a *Secret Santa*, and an uproarious take on Tchaikovsky's Nutcracker Ballet. Accompanied by Sister Robert Anne and her dashed hopes of having just one night as a Broadway singing star, Sister Hubert, Reverend Mother's sidekick who brings her own past to the convent, Sister Amnesia who started her pre-nun career as a Grand Ole Opry singer. The Reverend Mother gets a bit more than she bargained for; including the need to keep a watchful eye over Father Virgil who tips an overabundance of rum into the holiday baking. *Nuncrackers* is a fun-for-the-whole-family holiday musical that strengthens one's belief that everything turns out okay in the end. But, oh brother, what fun it is getting to the end! It's the perfect way to insure your holiday season is merry and bright.

Next in our season, is the wonderful romantic comedy ***Barefoot in the Park***. Written by popular playwright Neil Simon, the show centers around newlywed couple Corie and Paul Bratter, who are setting up house in a minuscule fifth-floor walkup apartment in a downtown-Manhattan brownstone. Paul is a straight-laced attorney, Corie a far more spontaneous free spirit. The two must contend with a lack of heat, a skylight with a gaping hole, several long flights of stairs, oddball neighbor Victor Velasco, and Corie's well-meaning mother, in addition to adjusting to married life. The play inspired the popular Oscar-nominated 1967 movie of the same name starring Robert Redford and Jane Fonda. This hilarious and touching production will keep you laughing from start to finish. On stage in February/March, it is the perfect Valentine's Day treat for couples.

Our summer musical is Rodgers and Hammerstein's ***The Sound of Music***. Perhaps, one the most loved musicals ever produced, *The Sound of Music* takes us to Salzburg, Austria and into the life of Maria, a nun who has been sent to be the governess of Captain von Trapp's seven children. Maria and the Captain clash over the children's upbringing and the mischievous and initially hostile children are determined to rid themselves of yet another governess. However, they grow to love Maria and she in turn grows to love them...and the Captain. The musical contains many popular songs, including *Edelweiss*, *My Favorite Things*, *Climb Every Mountain*, *Do-Re-Mi*, *Sixteen Going on Seventeen*, as well as the title song. This was also a popular movie in the 1960s, starring Julie Andrews as Maria. This delightful show has parts for all ages and appeals to audiences young and old.

The final show of our season is a children's musical, ***Willy Wonka Jr.*** This is the story of Willy Wonka, the owner of a magical and mysterious chocolate factory. Willy is getting ready to retire but he is looking for some "bright spark" to continue his candy confection. To find this person he holds a contest in which he puts five golden tickets inside his Wonka bars. The five lucky winners will received a tour of the chocolate factory and a lifetime supply of chocolate. Come along with the lucky winners, Charlie Bucket, Augustus Gloop, Veruca Salt, Mike Teavee and Violet Beauregarde to see what happens on their magical journey through the chocolate factory.



WE'RE OFF TO SEE THE WIZARD

Come join Dorothy (Sarah Horner, Napoleon) on her trip down the yellow brick road with her friends, Scarecrow (Seth Nofziger, Archbold); Tinman (Drew Horner, Napoleon); and Lion (Jaret McDermott, Wauseon).

After Almira Gultch (Lindsay Rohrs, Ridgeville Corners) takes Toto away, Toto escapes and goes back home to Dorothy. Dorothy decides there must be something better over the rainbow, so her journey begins. In search of what is on the other side.

On her journey, she meets Professor Marvel (Kevin Wietrzykowski, Whitehouse) who shows her that she has left a sad and maybe ill Auntie Em (Martha Wyse, Archbold) back home. She starts back home, to check on her Auntie Em and the rest of her family and friends, Uncle Henry (Keith Mann, Wauseon), Hunk (Michael Volkman, Archbold), Hickory (Justin Hines, Archbold) and Zeke (Michael McDermott, Wauseon). When she arrives home she can't find anyone home and escapes into her home to escape the tornado.

During the tornado Dorothy is knocked unconscious and wakes up in Munchkin Land where she is greeted by Glinda (Lynn Lehman, Archbold) and the munchkins (Andrew Canada, Wyatt Cerda, Kacey Elder, Emily Legenza, Aaron Mann, Makenzie Mann, Sarah Matthews and Kaylyn McDermott, Wauseon; Ines Coronado, Yari Coronado and Gretchen Lee, Pettisville; Andee and Josee Grime, West Unity; Alyssa Horner, Andrea Irving, Bridget King, Ryan Kruse, Tallon Meyer, Tarrah Meyer, Tianna Meyer and Sage Sinclair, Napoleon; Jessica Lindsay, Hope Nofziger, Kate Nofziger, Will Nofziger, Sid Ramirez, Gabriel Short and Lynne Stuckey, Archbold; Madison Van Scoder, Defiance; Bailey Short, Anna Stuckey and Gabriele Stuckey, Stryker; and Balynn Ponce, Ridgeville Corners). The munchkins are very grateful because Dorothy's house landed on the Wicked Witch of the East and killed here. They are celebrating when the Wicked Witch of the West (Lindsay Snyder, Toledo) arrives to find that her sister has been killed. As she tries to take the ruby slippers off her sister's feet, they disappear, and reappear on Dorothy's feet.

The witch threatens Dorothy, and Glinda tells Dorothy that she must keep the slippers on her feet at all times to keep her safe. Glinda tells Dorothy she should return home to Kansas as soon as possible to escape from the witch. When Dorothy asks how she can do that Glinda tells her to go to the Emerald City and speak to the Wizard of Oz (Kevin Wietrzykowski). Dorothy sets off on her journey, picking up the Scarecrow, Tinman, and Lion along the way. The quartet encounters lots of trouble, but eventually, with the help of Glinda, Dorothy is able to return home.

The cast is complete with Winkies, Jitterbugs, Poppies, Osians and Flying Monkeys portrayed by (Megan Beech, Mark Bockelman, Jacob Gobrogge and Jodi Irving, Napoleon; Taylor Brandt and Cassondra Fitzsimmons, Evansport; Andrea Cavin, Alicia Meyer, Nick Schroeder and Claudia Seibert, Defiance; Rosy Coronado and Char Lee, Pettisville; Jen Gisel, Donna Kinsman, Carrie Nofziger, Eliot Nofziger, Manuel Rodriguez, Hannah Short, Meg Short, Stan Short, Sue Short, Crissi Stuckey, David Stuckey and Ruthann Stuckey, Archbold; and Adam Gorrel, Delta).

Brenda Canada, Wauseon, is the Director, Teresa Van Sickle, Archbold, Assistant Director, and Kyle Rohrs, Ridgeville Corners, is the Music Director. Show dates are July 18, 19, 25 and 26 at 8 p.m. and July 27 at 2:30 p.m.

From the Cuelines editor, Christi Thomas - OCTA's May meeting:

*Finance Division reported things are progressing for "Dancing with Our OCTA Stars" to be held at Conference. Registration forms are on the website.

*Marketing/Membership/PR Division has the OCTA Manual (Monographs) almost done and hope to have it on CD-ROM by State Conference. They also hope to invite state legislators to the annual conference over Labor Day weekend to see firsthand what we're about.

*Joyce is working on putting the OCTA Membership Directory together, even though only 71% of member theaters have responded.

*Programming Division is busy working on OCTA Jr. to be held July 26 at the Columbus Performing Arts Center. The 2009 Conference will be held at the Eastgate Holiday Inn in Cincinnati (Southwest); 2010 is in Northwest; and 2011 is in Northeast.

*New lighting specs previously discussed are to be viewed as a guideline and not a "set in stone" requirement.

*Administrative Division is still updating OCTA's long range plans for each division and have decided to work on job descriptions and policies of one specific division each year to stay updated. New Regional Reps will be elected at each of the regional festivals in June.

*The next OCTA Board meeting is July 19, in Columbus.



P.O. Box 173
Archbold, Ohio 43502

PRSR STD
U.S. Postage
PAID
Archbold, Ohio
Permit No. 33

RETURN SERVICE REQUESTED



ACT's 2008/2009 Season

Deadlines for the
Director's Letter of Interest 2008/2009 Season are:

- July 28th - *Nun-crackers*
- September 5th - *Barefoot in the Park*
- October 17th - *The Sound of Music*
- December 22 - *Willy Wonka Jr.*

ACT Officers and Board Members		
Brenda Canada	419-682-7971	canadafamilyus@yahoo.com
Andrew Rohrs	419-267-3511	andrew.rohrs@gmail.com
Susan Short	419-335-9255	sejames1@embarqmail.com
Peggy Wright-Patterson	419-446-9129	wrightpatter@hotmail.com
Gareth Short	419-445-5965	garethjudith@earthlink.net
Ed Mooney	419-593-3176	moon@q1.net
Patti Rosebrock	419-682-1550	prosebrock@fm-bank.com
Randy Rohrs	419-267-3855	rroh@bright.net
Donna Kinsman	419-446-2603	kkinsman@bright.net
Teresa Van Sickle	419-445-0391	actdramaduo@peoplepc.com
Don Spohler	419-445-9011	donspohler@bright.net
Sue Stamm	419-445-2176	stammer@rtccexpress.net